

Tractor and Implements

Project # 6101.01

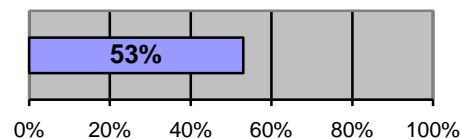


Description: The tractor and implements will be the major work-horse for heavy jobs in the community such as construction, road maintenance, unloading supplies, fence building, and farm work. The equipment is an 85hp tractor with the following implements: rotary cutter, rotary tiller, rear mounted blade, box blade, tandem disc harrow, 4-disc plow, seeder/planter, sprayer.

Cost: \$ 85,000

Date of Need: Oct-08

Funding Status:



Status Update: Underway